

Instructions and user manual

MB300



ALNOVA[®]

Millasur, SL.
Rúa Eduardo Pondal, nº 23 - Pol. Ind. Sigüeiro
15688 - Oroso - A Coruña 981 696465 www.millasur.com



ANOVA wishes to congratulate you for choosing one of our products and guarantees the assistance and cooperation that has always distinguished our brand over time.

This machine is designed to last for many years and to be of great use if used in accordance with the instructions contained in the user manual. We therefore recommend that you read this instruction manual carefully and follow all our recommendations.

For more information or doubts, you can contact us through our web supports such as www.anova.es.

INFORMATION ABOUT THIS MANUAL

Pay attention to the information provided in this manual and on the machine for your safety and that of others.

- This manual contains instructions for use and maintenance.
- Take this manual with you when you go to work with the machine.
- The contents are correct at the time of printing.
- The rights to make changes at any time are reserved without affecting our legal responsibilities.
- This manual is considered an integral part of the product and must remain with it in case of loan or resale.
- Ask your dealer for a new manual in case of loss or damage.

READ THIS MANUAL CAREFULLY BEFORE USING THE MACHINE

To ensure that your machine provides the best results, please read the usage and safety regulations carefully before using it.

OTHER WARNINGS:

Incorrect use could cause damage to the machine or other objects.

The adaptation of the machine to new technical requirements could cause differences between the content of this manual and the purchased product.

Read and follow all instructions in this manual. Failure to follow these instructions could result in serious personal injury.

INDEX

1. BASIC SAFETY INDICATIONS
2. PRECAUTIONS FOR USE
3. TECHNICAL SPECIFICATIONS
4. PARTS OF THE MACHINE
5. AREAS OF APPLICATION
6. INSTRUCTIONS FOR CHAIN INSTALLATION
7. CHAIN MAINTENANCE
8. ENVIRONMENT
9. EXPLODING
10. EC DECLARATION OF CONFORMITY

1. BASIC SAFETY INDICATIONS

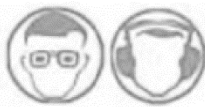
Read all safety warnings and all instructions. Failure to warnings and instructions may cause electric shock, fire and/or serious injuries.

Note: Save all warnings and instructions for future reference.

Note 2: Power tools are understood as both tools that are connected directly to the current and those that work through battery.

1. Keep the workplace clean and tidy. Do not use tools on cluttered workstations and counters, as accidents are more likely to occur. Clean the place before using the tool.
2. Pay attention to the workplace environment. Do not use it in dark and humid places. Battery or power tools should not be exposed to rain (water) and should not be used where flammable or combustible liquids are present.
3. Do not let people touch the tools or connection cables.
4. When power tools are not in use, they should be stored in a safe, dry place where children cannot reach them.
5. Must be used within the specified load capacity of the tool.
6. Use a tool appropriate for the volume of work to be performed. Do not use tools for the wrong purpose.
7. Wear suitable clothing. Do not wear jewelry or loose clothing to avoid injury caused by high-speed rotation of the tool. It is appropriate to wear non-slip shoes when working outdoors.
Wear safety glasses. Wear a mask and goggles when there is danger of dust inhalation.
8. Do not damage the cable. Do not pull the power cord to unplug the plug, etc. Also, keep the power cord from touching very hot objects, sharp metal edges, or getting oily.
9. Fix the work piece. Use fixtures or workbenches.
10. Do not assume abnormal postures, be sure to maintain a safe posture and keep your balance. Always use the tool firmly and safely.
11. Pay attention to the maintenance of tools. The tool must be kept in good condition, sharp at all times for good results and safety. Lubricate parts in accordance with regulations. Check cables regularly. If you find any damage, send it to the designated service center for repair. The handle must be kept dry, clean and free of grease.
12. When the tool is not in use or when performing maintenance tasks such as changing cutting accessories, make sure the tool is not connected to the power source.
13. Adjustments on the machine must always be made with the tool switched off and without power connection.
14. Avoid accidental starting. Before inserting the battery, make sure the power switch on the tool is turned off.
15. Stay vigilant when you work. Pay attention to the workpiece and tools. Do not use tools when you are tired.
16. Before using the tool, carefully check whether the guard or other parts of the tool are damaged, check whether all moving parts are in the correct position, and whether the parts to be fixed are well fixed, etc.
If there are damaged parts, immediately request a specialized workshop to repair or replace it. If there is any problem with the switch of the tool, ask a special service center to replace it immediately. Do not use it if it is not in good condition.
17. When working, the body should not be in contact with grounded conductors, such as iron pipes, radiators, refrigerators, etc. You must wear suitable footwear.
18. When replacing parts, use the original brand parts. Using other parts may result in serious injury.

19. To connect the power, pay attention to whether the voltage of the power supply is the same as that of the nameplate. When the voltage of the power supply is higher than the applicable voltage of the tool, it is easy to damage the tool and cause damage to the tool. On the contrary, if the voltage of the power supply is lower than the voltage required by the tool, it will be detrimental to the motor.
20. Avoid contact with corrosive substances in a clean, dry and ventilated environment with a temperature of 0-40°C and relative humidity not higher than 75%. Keep the battery away from fire and heat sources, rain and water
21. Please do not charge the product from the discharge terminal and must be charged from the charging plug with the corresponding charger. When the charging indicator bar of the charger stops scrolling, please remove the charging plug in time to avoid overcharging the battery.
22. Do not keep flammable and explosive materials near the battery or charger during charging.
23. The product has a surge protection function. When the use current of the electrical equipment exceeds the maximum output current of the product, the protection circuit will act and the electrical equipment will not work.
24. Please use the original battery charger to charge the battery and extend its life. Avoid long-term uninterrupted charging and charging with chargers that do not meet the requirements to avoid damage or danger. It is not recommended to charge the battery for a long time. Unplug it when it's fully charged.
25. Long-term storage will accelerate battery self-discharge. Room temperature and humidity between 10°C ~ 30°C and 65 ± 20% are suitable for this storage. The impact of this discharge due to time will require a charge-discharge cycle every three months to restore the original performance of the battery.
To prevent battery capacity loss, please charge the battery at least once every 3 months.
26. You must use the original battery and charger of the machine.
27. When the battery is fully charged, unplug it from power.
28. The battery has temperature protection, low voltage protection and voltage spike protection. The power supply is found to be abnormal during use, please check whether the temperature is too high due to unreasonable use, and should be cooled down before use. Please charge in time when the voltage is too low and the working current will also protect.
29. If the battery has sparks, smoke or a peculiar smell while it is working, remove it immediately and contact the authorized dealer.
30. Please use it at a temperature of 0 to 40 degrees, charging the battery in good environmental conditions.



Wear goggles and protect your eyes
Wear a dust mask to prevent inhalation of dust.
Wear earmuffs to prevent hearing damage

2. PRECAUTIONS FOR USE

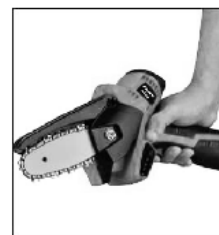
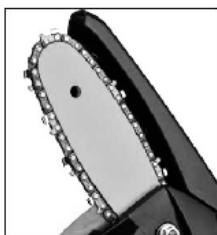
31. Charge the battery, the red light will be on when charging, and the green light will be on when fully charged.
32. Install the chain according to the requirements of the operation diagram.
Note: Unplug the battery pack during installation and removal of the bar or chain.
33. After the installation is complete, first turn on the machine without load and observe that the machine works normally.
34. It is not advisable to cut too hard, according to the actual cutting situation, small first, then large.

3. TECHNICAL SPECIFICATIONS

MODEL	MB300
Voltage	16V
No load speed	4600r/min
Bar size	4"
Power	252W
Drums	2PCS
Loading time	1.5h

4. PARTS OF THE MACHINE

1. Chain cover
2. Sword
3. Chain
4. Power switch
5. Non-slip handle
6. Battery



ALNOVA[®]

5. AREAS OF APPLICATION



cut bamboo



Tree Trimming



Chopping firewood



Pruning fruit trees

6. INSTRUCTIONS FOR CHAIN INSTALLATION

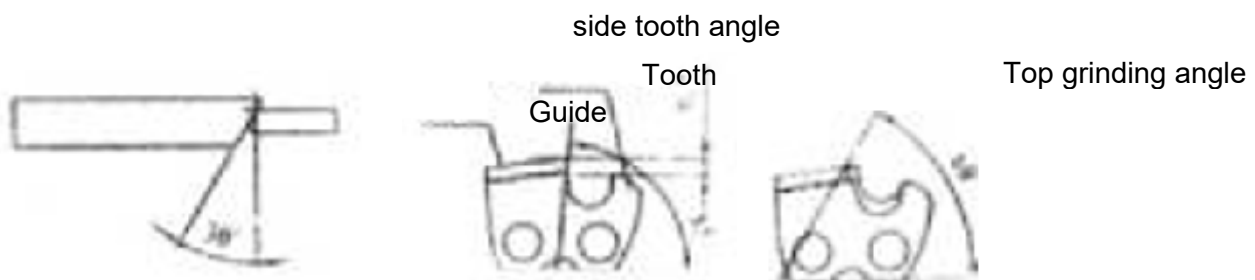
- STEP 1: Install the bar and chain on the sprocket and adjust the chain to the proper position.
- STEP 2: Close the sword cover and install the screws.
- STEP 3: Use a wrench to tighten the bolts.



7. CHAIN MAINTENANCE

1. General chainsaw maintenance:

- To keep your tool in the best condition during cutting operations, be sure to keep the chain teeth sharp and grind them properly as shown in the figure below.



Ideal when the upper tooth angle is 30 degrees

Orient the lateral teeth at 85 degrees.

If the top and side teeth are ground and oriented correctly, the top grind angle should automatically convert to a 60 degree angle.

- When filing the chain, be careful not to touch the cutter tooth when pushing the file in the direction indicated by the arrow.
 - When the chain has already been sharpened 2-3 times, the upper tooth guide may also need to be lightly filed. This is because the guide is used to measure the depth of cut.
 - When filing the cutting tooth it will lose some height due to the characteristic curved shape of the tooth. As a result, the tooth will sit lower than the depth gauge, causing it to not cut.
 - To compensate for this defect, use a flat file to smooth the top of the tooth guide so that it is approximately 0.5mm lower than the tip of the tooth. Be careful not to file the fence too much, otherwise the cutting blade will tend to bind and the tool will jam when cutting.
2. Remove wood chips
- after cutting wood
 - Pass the lube oil hole into the bar groove to remove wood chips and dust, etc.
 - Clean the lube oil passage. At this time, remove the bar for maintenance.

8. ENVIRONMENT



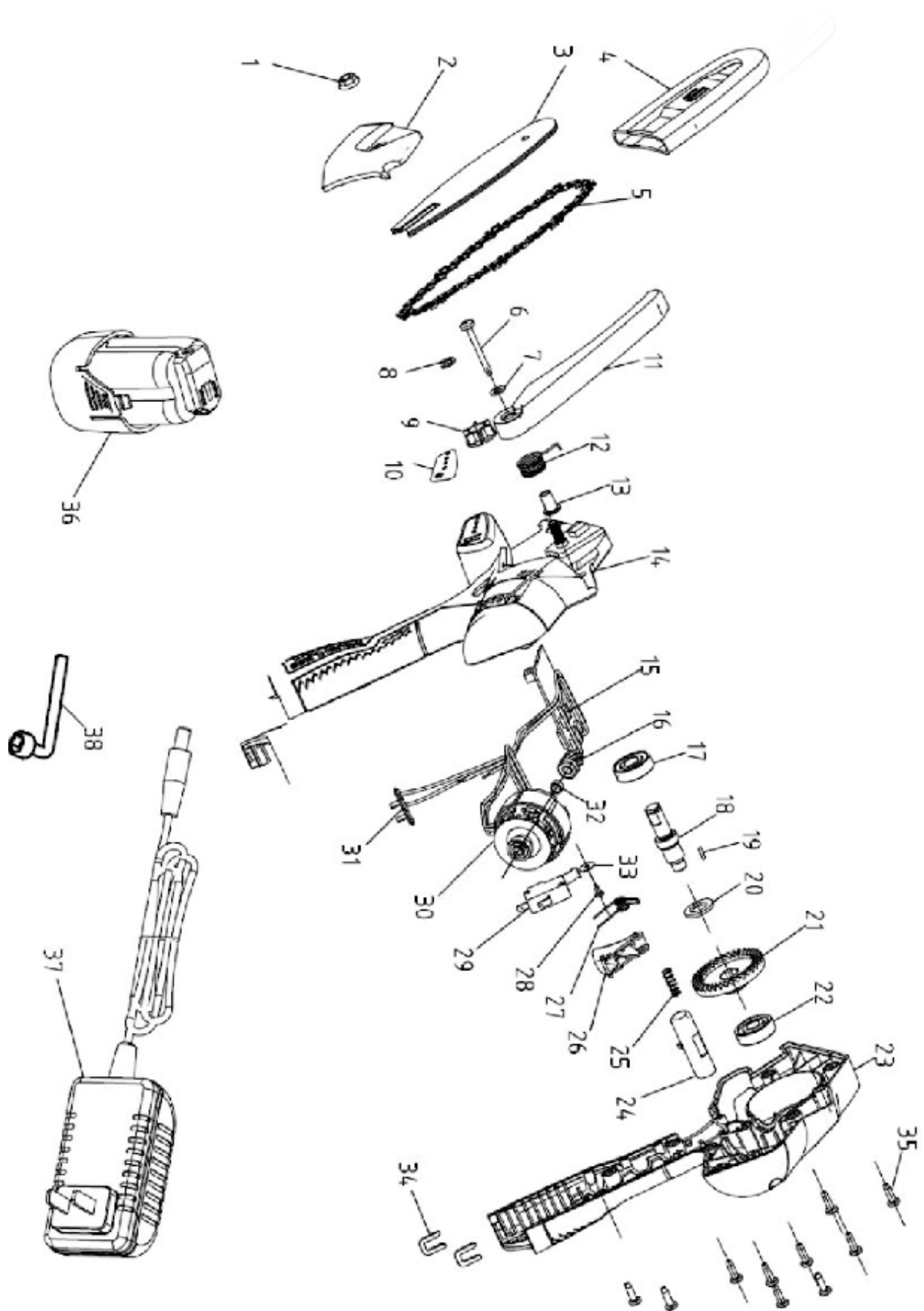
If your machine needs to be replaced after extended use, please do not put it in household waste, dispose of it in an environmentally safe manner. Never pour chain lube residue or 2-stroke fuel mixture down the drain or onto the ground. You must go to a special collection or dump point.

If the machine is to be disposed of or no longer needed, do not dispose of the device with your household waste, but dispose of it in an environmentally friendly manner. Completely empty the oil/lubricant and fuel tanks and dispose of the waste at a special collection point or dump. Please also dispose of the device itself at an agreed collection/recycling point. By doing so, the plastic and metal parts can be separated and recycled. Information regarding the disposal of materials and devices are available from your local administration.

9. EXPLODING

ALNOVA

MB300



10. EC DECLARATION OF CONFORMITY



DISTRIBUTION COMPANY

MILLASUR, SL
RUA EDUARDO PONDAL, Nº 23 PISIGÜEIRO
15688 OROSO - A CORUÑA
SPAIN



EC DECLARATION OF CONFORMITY

In compliance with the different CE directives, it is hereby confirmed that, due to its design and construction, and according to the CE mark printed by the manufacturer on it, the machine identified in this document complies with the relevant and fundamental health and safety requirements. of the aforementioned EC directives. This declaration validates the product to display the CE symbol.

In the event that the machine is modified and this modification is not approved by the manufacturer and communicated to the distributor, this declaration will lose its value and validity.

Machine name: BATTERY CHAINSAW

Model: **MB300**

Recognized and approved standard to which it conforms:

directive2006/42/EC
directive2014/35/EU
directive2014/30/EU

According to standard:

EN ISO 12100:2010, EN 62841-1:2015
EN 60745-2-13:2009/A1:2010, EN 55014-1:2006/A2:2011,
EN 55014-2:2015, EN 61000-3-2:2014,
EN 61000-3-3:2013

Company seal

MILLASUR, S.L.U.
Rúa Eduardo Pondal,23 - Pol.EMP..Sigüeiro
15688-Oroso-A Coruña
Tel.(+34) 981 69 64 65 - Fax (+34) 981 69 08 61
e-mail: millasur@millasur.com
CIF: B-15 749 922

07/12/2021